



# Safety and security at the University of Jyväskylä

2026

- Security Specialist Mikko Malm



## **Take care of Yourself and each other. And be safety**

Safety awareness is an important part of professionalism.  
At university, you learn to be a professional in your field

→ learn to be a **safety** professional in Your field too.



**Attidute saves lives and creates safety**

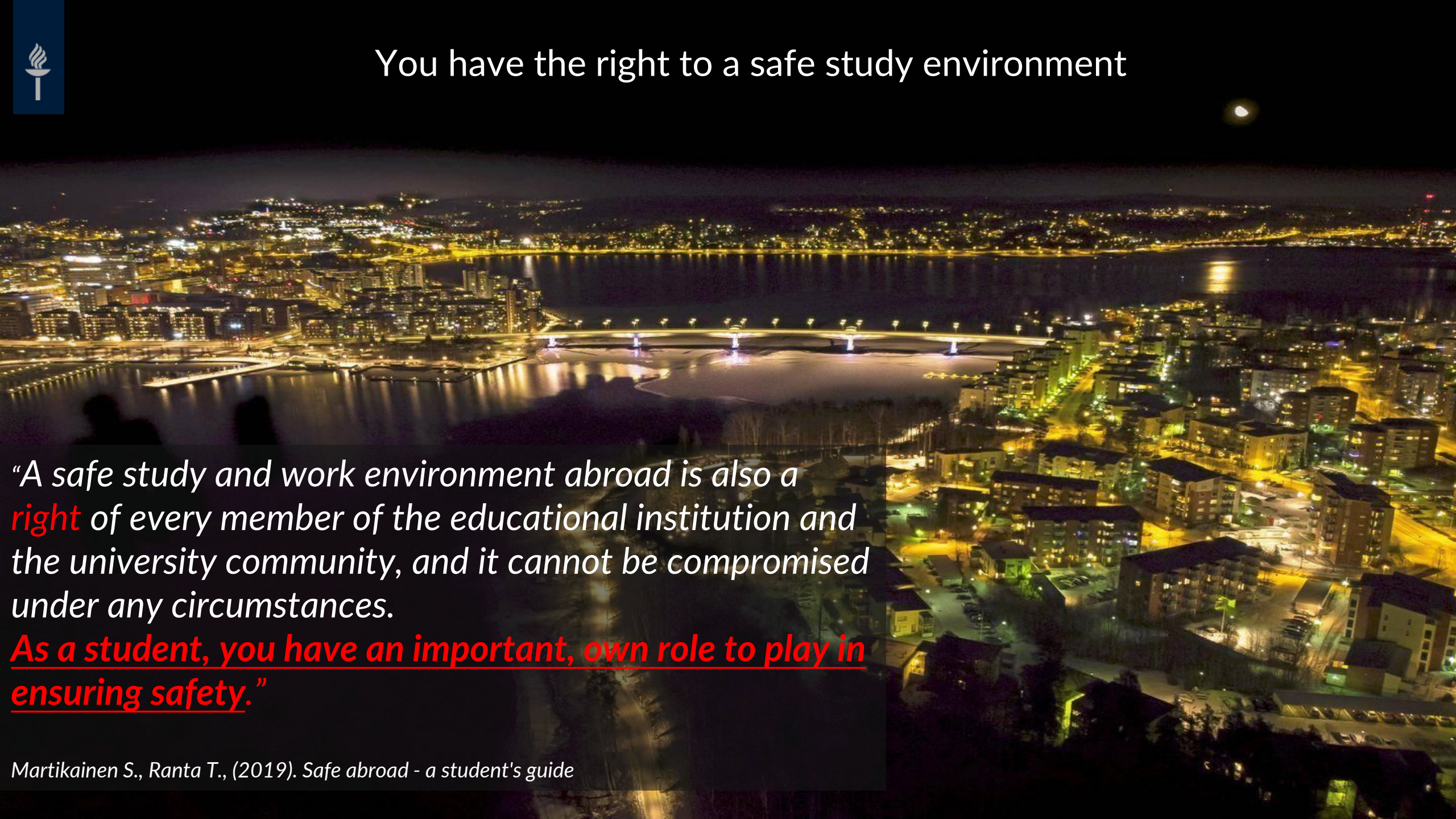


**Finland is one of the safest countries in the world – JYU is a safe place to study, work or visit**

**Still, be cautious and use common sense!**



# You have the right to a safe study environment

A wide-angle, nighttime aerial photograph of a city. In the center, a large, illuminated bridge spans a body of water. The city lights are reflected on the water's surface. The foreground shows silhouettes of trees and a dark area, possibly a park or undeveloped land. The background shows the city extending to the horizon under a dark sky with a full moon.

*“A safe study and work environment abroad is also a **right** of every member of the educational institution and the university community, and it cannot be compromised under any circumstances.*

***As a student, you have an important, own role to play in ensuring safety.”***



**Take care of Yourself and each other.  
And be safety!**



# What is your role in making safety?

- Each of us, members of the university community has an important role of **making safety and security**.
- To manage and implement safety and security at the university, **we (security unit) need information** and observations about the issues that affect it.
- By telling us about your experiences and observations, you can improve safety of our environment.
- We hope you will report about:
  - Possible dangerous situations
  - Close call situations
  - For crimes
  - Other safety or security related incidents
- If you notice an acute danger:
  - Try to prevent damages
  - Get yourself and others safe
  - Report the matter immediately so that the matter causing the danger can be corrected



# How to?

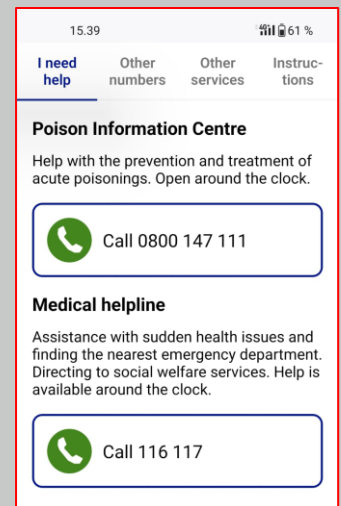
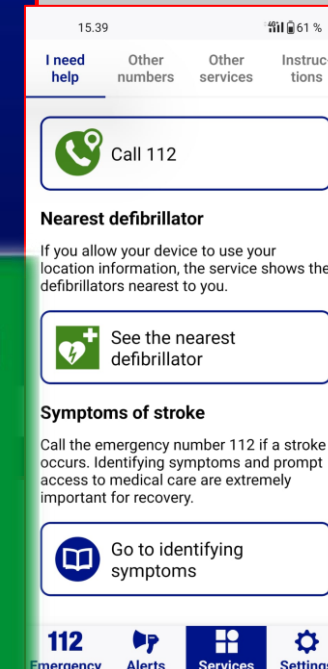
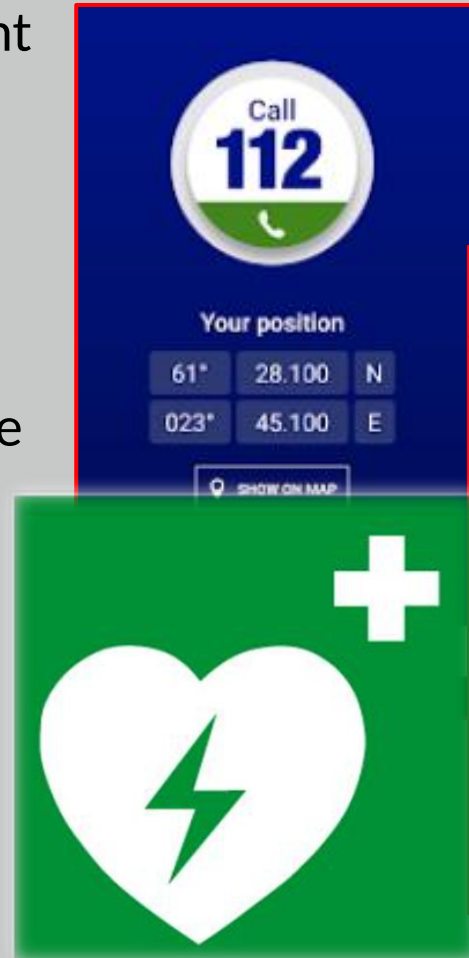
- Always, in urgent emergency situations, call the authorities first.....
  - Tell: where/what is happening.
  - Listen emergency center instructions..... and help & inform others, prevent damages & more escalation....and be safe “living hero”.
- Follow the instructions and ask if you are not sure.
  - Notify the staff if you notice someone acting contrary to the instructions, causing danger.
- **Be prepared** for unusual situations, such as possible accidents, fire alarms or power outages.
  - Familiarize yourself with emergency exit routes, meeting points, the location of fire extinguishers and first aid equipment.
- Make sure that locked doors and windows close after you.



# Reporting an emergency



- Dial **112** (emergency number) in emergencies when
  - Someone's life, health, property or the environment is threatened or in danger
  - You are witnessing a crime being committed
- **112** works in all EU countries
- Download the 112 Suomi mobile from app/play store
- It makes it easier for authorities to **locate** you in emergencies.
  - In the application you will find the most important services from which you can get official help.





# Fire safety

- Fire alarm
  - If you hear the fire alarm sounding, leave the building immediately using the nearest exit route.
  - Go to the meeting place
- Learn the alternative exit routes
- Your duty is to change batteries & test that the fire alarm works in your apartment
- [JYU Emergency Response Guide](#)
- [Rescue plan of KOAS](#)
- [Emergency plan of Soihtu Kortepohja](#)







# Experiencing bullying or harassment on campus?



- The university must offer a safe study environment where everyone has the right to study without experiencing harassment, bullying and discrimination (Universities Act 41 §).
  - **The University of Jyväskylä is a community where bullying or harassment is not tolerated.**
- If you experience bullying, harassment or discrimination:
  - You can contact the University's Specialist of **study wellbeing**: Hanna Ahola, email: [hanna.r.ahola@jyu.fi](mailto:hanna.r.ahola@jyu.fi), tel. +358 40 805 4352
  - **JYY's student union's specialist in Social Affairs**: Noora Koskela, email: [sopo-asiantuntija@jyy.fi](mailto:sopo-asiantuntija@jyy.fi) , tel: +358 50 307 0540
  - **JYY's student union's communications specialist**, Jenni Laitinen, email: [viestinta-asiantuntija@jyy.fi](mailto:viestinta-asiantuntija@jyy.fi), tel: +358 50 352 9591

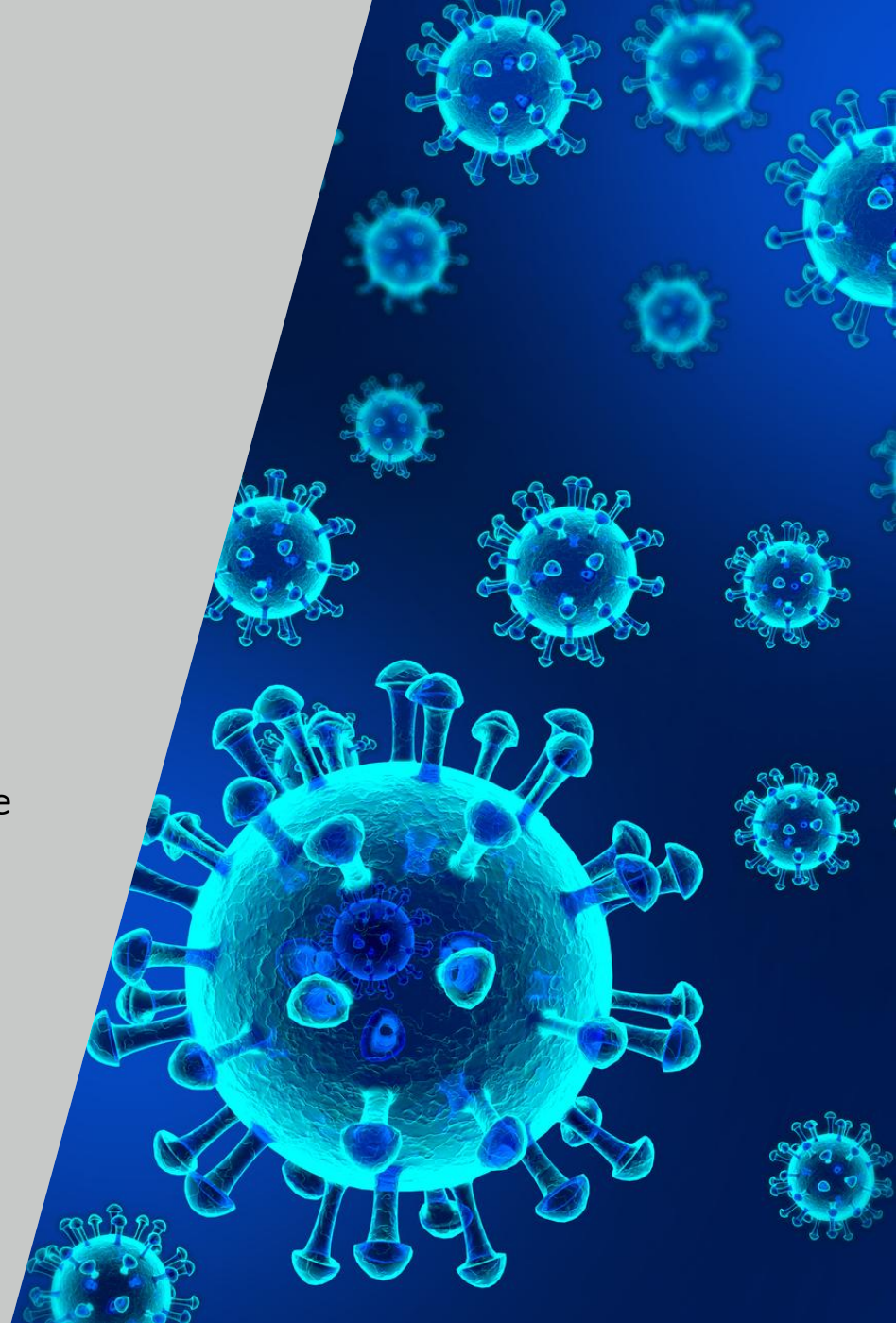


**Take care of Yourself and each other.  
And be safety!**



# Health safety

- There are currently no covid-related restrictions at the University of Jyväskylä.
- Still, we **strongly recommend**:
  - Follow good hand and coughing hygiene.
  - If you get sick, stay in your apartment.
  - Viruses spread easily in close contacts and in groups. Avoid close contact with people when you are sick.
  - In addition to Covid 19, influenza and other disease-causing viruses are circulating at this time of year.
- JYU is a **scent free** and **non smoking** area.








# Jyväskylä Tap Water: Pure, Safe, and Sustainable World-Class

- **Quality:** Finland has some of the cleanest water in the world; often cleaner than bottled brands.
- **Top Rankings:** Often ranked as the best drinking water in the world (UNESCO).
- **Strict Standards:** Water quality is monitored more strictly than bottled water.
- **Natural Source:** In Jyväskylä, we drink groundwater naturally filtered through Ice Age ridges.
- **Save Money:** Tap water costs a fraction of a cent per liter. Buying bottled water is 1000x more expensive.
- **Eco-Friendly:** Zero plastic waste.
- **Drink like a local—fill a reusable bottle from the tap!**





# Traffic safety

- **As a Pedestrian** 
  - **Crosswalks are king** – Drivers usually stop but always check both ways before crossing.
  - Wear a **reflector** in the dark months (from November to March it's practically essential). → *You can buy reflectors at well-stocked grocery stores or supermarkets.* Wearing a reflective vest is recommended
  - Watch out for icy surfaces in winter – good grip on shoes or traction devices can prevent falls.
- **By Bicycle** 
  - Use a **white** headlight and a **red** taillight on your bike in dim or dark conditions (mandatory)
  - Wear a helmet (recommended)
  - Use cycle paths whenever possible (cycling on a pedestrian walk is forbidden)
- **Winter-Specific Tips** 
  - Prepare for **slippery roads and low visibility** – adjust speed and braking distance accordingly
  - Dress in layers and protect your head and hands from the cold.
  - Even with grit on paths, black ice can still surprise you.

## How to wear a reflector?



The reflector works by reflecting light back to its source. Wearing a reflector helps car drivers see pedestrians in the dark. Even as far as 600 meters away.

Wrists and ankles are good places for reflectors. Wear reflectors on both sides.

The more reflectors you wear the better the car drivers can see you.



863. 9.1.2026 16



# Scooters - drive safely and park correctly!

- Rental electric scooters are popular in Jyväskylä, but accidents causing injury occur every day
- **How to prevent accidents and ride responsibly:**
  - Never ride under the influence of alcohol or drugs (illegal)
    - In Finland, a **0.5‰ blood alcohol limit** applies, and there is zero tolerance for riding under the influence of narcotics.
  - Do not carry passengers on an electric scooter (illegal)
  - Wear a helmet when riding, if possible (recommended)
  - Observe and notice other road users, especially children, older people, and pets.
  - Park correctly
    - Scooters must be placed so they do not block, endanger, or inconvenience anyone's movement. Dedicated scooter parking areas are available on our campus.



Seminaarinmäki  
Seminar Hill

Mattilanniemi  
Mattila Cape

Ylistö  
Ylistö



“Ylistö – from the Finnish word ‘ylistää’, to praise; so you could call it ‘Praise Hill’ or ‘Praise side of the lake’.”

Perplexity



Be cautious – the frozen surface of the lake can be dangerous when ice has **just emerged** and during Spring, when air temperature rises and ice surface **starts melting**.

Don't be the first one on the ice -  
don't be second or even fifth....





Be cautious – the frozen surface of the lake can be **fun**





**Take care of Yourself and each other.  
And be safety!**



# Thefts

- JYU premises are mainly **open to everyone** and our regular thieves are well aware of this.
- If you don't want to get rid off your laptop, phone, wallet etc., **do not leave** your valuables unattended.
- Thieves are also interested in valuable bikes. During autumn, bikes are stolen on a monthly basis. **Use a decent lock and lock your bike into fixed object!**
- In winter, valuable clothes are a common target
- Clothes left in coat racks at JYU are at your own risk

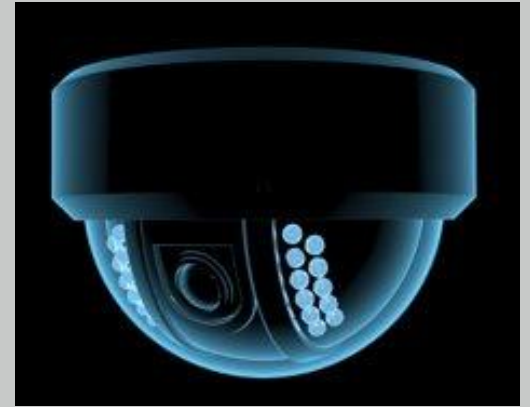




# CCTV in campus

closed-circuit television - commonly known as a video surveillance technology

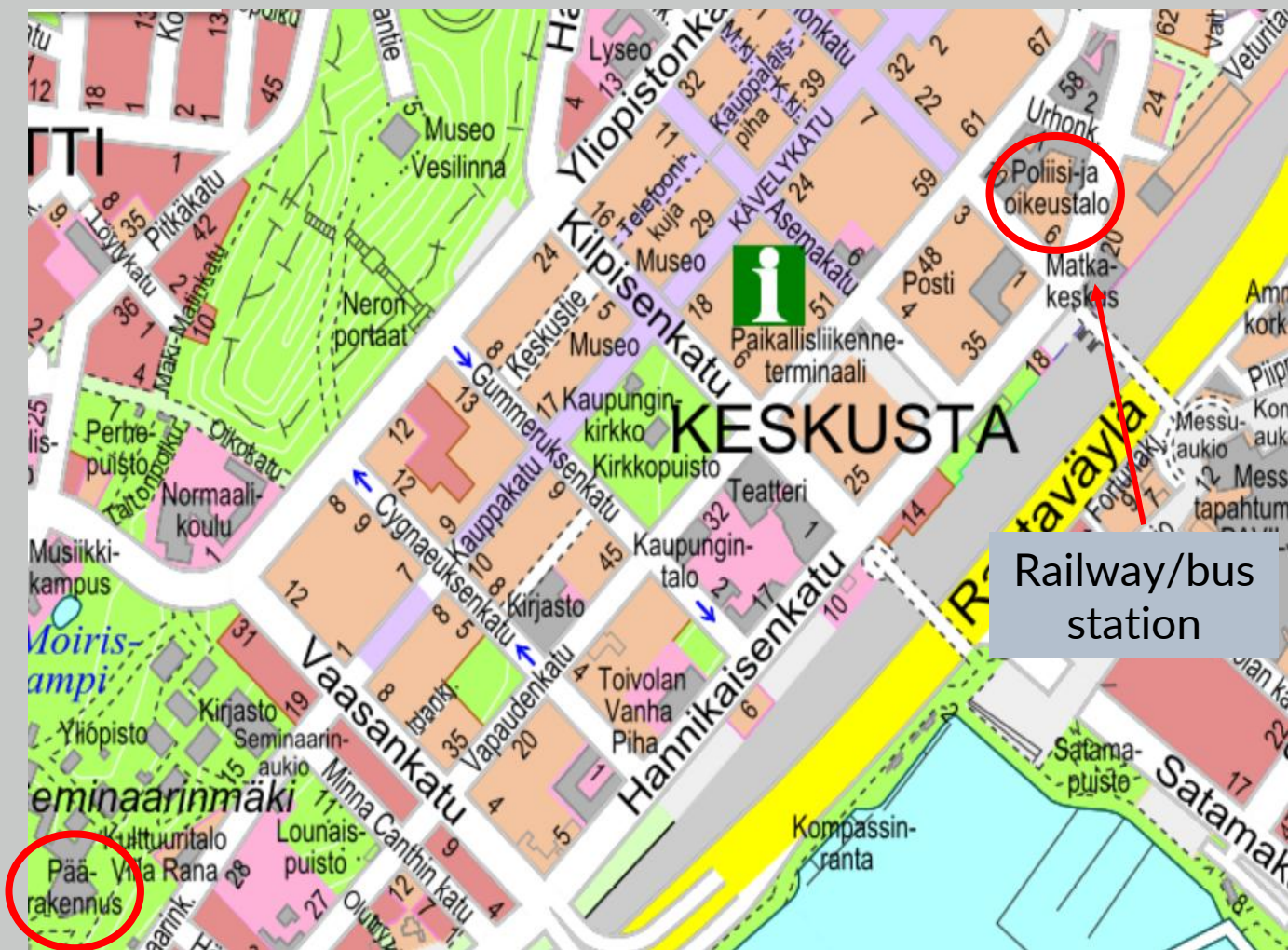
- JYU buildings are mostly covered with a CCTV system
- System does not stop crimes from happening, but helps to solve them
- CCTV materials are confidential and given only to police
- System is administered by JYU Clavis service desk





# Lost and Found Office

- Items lost or found?
- <https://poliisi.fi/en/jyvaskyla-police-station-lost-property>
- Lost and Found Office at the Jyväskylä Police Station at Urhonkatu 1
- Monday 9-15
- Wednesday 9-15
- Friday 9-15





# Reporting a crime

- An offence can be reported at
  - [www.poliisi.fi/en](http://www.poliisi.fi/en) (preferred)
  - police station (Urhonkatu 1, Jyväskylä)
- Monday 9-15
- Wednesday 9-15
- Friday 9-15
- No report → no investigation





# JYU's responsibilities

- JYU **is responsible** for the safety and security of its main duties, teaching and research, as well as the university premises.
- JYU **is not responsible** for the safety and security of students' free time, free time trips or accommodation.





# Who to contact with questions about safety and security?

Security Team

Safety and Security Manager Teemu Keränen, +358504424884, [teemu.v.keranen@jyu.fi](mailto:teemu.v.keranen@jyu.fi)

Security Specialist Mikko Malm [mikko.a.malm@jyu.fi](mailto:mikko.a.malm@jyu.fi)

Keys, access cards → Clavis office

Security Coordinator Anssi Herttala, +358408054575, [anssi.herttala@jyu.fi](mailto:anssi.herttala@jyu.fi)



Have a safe stay in Jyväskylä!

**Take care of Yourself and each other.  
And be safety!**



JYVÄSKYLÄN YLIOPISTO  
UNIVERSITY OF JYVÄSKYLÄ

