

JYVÄSKYLÄ

On the move
Youthful, though born in 1837

ONE OF THE MOST POPULAR PLACES TO MOVE IN FINLAND



Photo: Hanna-Kaisa Hämäläinen

JYVÄSKYLÄ



A photograph of a woman with blonde hair, wearing a blue denim top, holding the hand of a young girl in a light green dress. They are outdoors in a park-like setting with trees and other people in the background. The image is overlaid with a semi-transparent graphic of the Finnish flag's colors (white, blue, and yellow) in diagonal stripes. The text '150 000 INHABITANTS' is prominently displayed in the upper left.

150 000 INHABITANTS

Photo: Hanna-Kaisa Hämäläinen

JYVÄSKYLÄ



40 000 STUDENTS

Every 4th person is a student



CULTURE AND ART

The largest number of Aalto-designed
buildings in the world



CAPITAL OF SPORT JYVÄSKYLÄ

A passion for sport
and well-being

JYVÄSKYLÄ



FOOTBALL HALL

The Huhtasuo Football Hall was opened in 2025



SPORTS AND NATURE

- Nature trails (luontopolut in Finnish)
- Four National parks in Jyväskylä Region
- Laajavuori recreation area
- Harju and Vesilinna lookout tower
- Aalto Alvari and Wellamo swimming halls
- Lake Jyväsjärvi Rantaraitti recreational route - Finland's largest outdoor gym
- Ice hockey, local team: JYP
- Local Finnish baseball teams: Kiri and Kirittäret

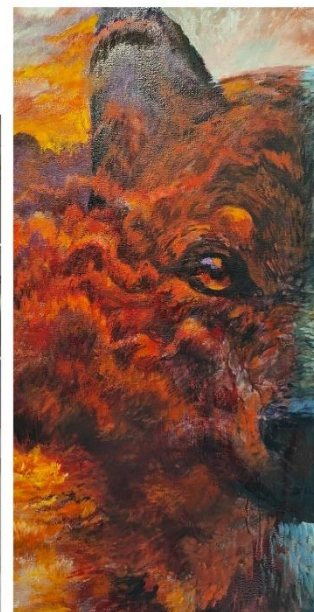




AALTO²-MUSEUM CENTER

ART AND MUSIC

- Aalto2 museum centre
- Jyväskylä Art Museum
- The Museum of Central Finland
- Gallery Ratamo
- The Finnish Air Force Museum
- The Craft Museum of Finland
- Jyväskylä Sinfonia
- Lutakko Live Music



THOUSANDS OF EVENTS



JYVÄSKYLÄ



EVENTS

- City of Light Festival 25.-27.9.2025
- Yläkaupungin Yö festival in Jyväskylä (in May)
- Jyväskylä Festival 1.7.2025–7.7.2026 (Jyväskylän Kesä)
- Sauna Region week (in July 2026)
- Suomipop Festival Jyväskylä 9.-11.7.2026
- Secto Rally Finland, the Word Rally Championship 30.7.-2.8.2026

Visit Jyväskylä list of events <https://visitjyvaskyla.fi/en/events/>
Jyväskylä Event calendar! <https://kalenteri.jyvaskyla.fi/en>

CITY OF HUMANE GROWTH

Top sectors:

- ✓ ICT & Cyber Security
- ✓ Sports & Wellbeing
- ✓ Industry Renewal
- ✓ Education Expertise



BUSINESS > JYVÄSKYLÄ

+750 NEW COMPANIES
EVERY YEAR



ENTERPRISES WITH MOST EMPLOYEES IN CENTRAL FINLAND 2024

1	Keskimaa	grocery, travel and catering, transport and fuel retailing	11	Posti Group
2	Valmet	a supplier of technology, automation and services to the pulp, paper and energy industries	12	Attendo
3	K-ryhmä	grocery trade, construction and building technology, car trade	13	Go On Jyväskylä
4	Pihlajalinna*	social and health care services	14	Lidl Suomi
5	Valtra	a tractor manufacturer	15	Telia Finland
6	Metsä Group	forest industry company	16	Lassila & Tikanoja
7	Patria	defence, security and aviation	17	Terveystalo*
8	ISS Palvelut	cleaning services	18	UPM
9	SOL	cleaning services	19	Valio
10	Mehiläinen*	social and health services	20	Esperi Care

ETELÄPORTTI

An advanced digital service hub for
the manufacturing industry

JYVÄSKYLÄ HIPPOS

The leading centre of sport, physical recreation
and well-being in the Nordic countries



PLANS FOR BECOMING ONE OF FINLAND'S HYDROGEN VALLEYS

Focusing 3 Areas of Cefmof



CEFMOF
Central Finland
Mobility
Foundation



JYVÄSKYLÄ IN BRIEF

Population annual
growth

+1 000

681

New homes
built in 2024

Every third
adult has a
higher
education
degree

500 km

skiing tracks, trails
and recreational
routes

The only
Faculty of Sport
and Health
Sciences in
Finland

Unemployment
6/2025

15,7 %

7th largest city
in Finland, with
150 000
inhabitants

Top places
to move to
in Finland

3 000
international
students*

9 000

Business offices in
2023

66 792

Jobs in 2023

Every third citizen
exercises
4-6 times a
week

Everything
within

15 min
reach

THANK YOU

Satu Heikkinen
International Relations Manager
City of Jyväskylä
satu.heikkinen@jyvaskyla.fi
+358 503255110

JYVÄSKYLÄ 

JYVÄSKYLÄ LANDMARKS

- Jyväskylä Harju ridge and the Vesilinna lookout tower
- Jyväskylä's Town Church (1880)
- Jyväskylä City Hall (1899)
- Kärkinen bridge
- Kuokkala water tower
- Matti Nykänen's ski jumping hill

LIVE LIKE A LOCAL IN JYVÄSKYLÄ

- Teeleidi tea room
- Morton, a container restaurant (in summer)
- Atmospheric Toivola Old Courtyard
- Jyväskylä Lutakko harbour
- Rantaraitti recreational path
- Harju steps