


UNIVERSITY OF JYVÄSKYLÄ

INTRODUCTION TO DOCTORAL STUDIES IN JYU

22.5.2015
Tuula Oksanen, Graduate School Coordinator, PhD
University Services, Division of Strategic Planning and Development
tuula.a.oksanen@jyu.fi




UNIVERSITY OF JYVÄSKYLÄ

Aim and contents

- Introductory lecture to [Orientation for doctoral studies](#)
- National regulations on postgraduate education
- Structure and organisation of doctoral studies in JYU Graduate School
- Things to consider at the beginning of doctoral studies

21 May 2015



UNIVERSITY OF JYVÄSKYLÄ

Targets of postgraduate education

Government Decree on University Degrees (794/2004)

The aim of postgraduate education is that the student:

- 1) becomes well-versed in his/her own field of research and its social significance;
- 2) gains the knowledge and skills needed to independently and critically apply scientific research methods and to produce new scientific knowledge;
- 3) becomes conversant with the development, basic problems and research methods of his/her own field of research;
- 4) gains such knowledge of the general theory of science and of other disciplines relating to his/her own field of research that enables him/her to follow developments in them; and
- 5) **gains adequate language and communication proficiency and other skills required in demanding expert and development roles and in international collaboration.**

21 May 2015



UNIVERSITY OF JYVÄSKYLÄ

Requirements for doctorate degree

Government Decree on University Degrees (794/2004)

To be awarded a doctorate, the student must:

- complete the required postgraduate studies
 - In JYU, 30 – 60 ECTS
- **demonstrate independent and critical thinking in the field of research**
- write a doctoral dissertation and defend it in public
 - [Dissertation requirements at the University of Jyväskylä](#)

21 May 2015



Organisation of doctoral studies at JYU

JYUGS: Structure and General Principles

<https://www.jyu.fi/graduateschool/structure>

- Structure and organisation
- General principles on student recruitment, student guidance and supervision, degree requirements and teaching, doctoral degree funding, part-time doctoral students
- Decision making, preparation and responsibilities

Degree Regulations of JYU

<https://www.jyu.fi/hallinto/strategia/ohjotosaannot>

- Study right
- Supervision
- Preliminary examination and public examination of doctoral dissertation
- Assessment and grading of doctoral dissertation

Faculty specific additional guidelines on the structure, rules and practices of doctoral training



21 May 2015

Structure of the graduate school

1 University Graduate School

- Steers the implementation of doctoral training in faculties

7 Faculty Doctoral Schools

- Admit students, organise training, award degrees

Around 1 700 doctoral students in 19 Doctoral Programmes

- Implement doctoral training



21 May 2015

UNIVERSITY OF JYVÄSKYLÄ

Make a plan for your Doctoral studies

Target time of 4 years
for full-time students!

Dissertation and discipline specific studies
- Advancement of knowledge through original research

Research skills

Communication skills

Professional identity

Pedagogical, leadership and development activities

What are your career aspirations?

21 May 2015

UNIVERSITY OF JYVÄSKYLÄ

Establish relationship with your Supervisors

Supervision of doctoral student					
Regular guidance by the supervisor	Support of the follow-up group	Teaching	Study guidance	Discussion of postdoctoral career prospects	Participation in the activities of the university community

- Register a supervision document
- Make sure you have a follow-up group
- Get to know the [responsibilities of the doctoral student, supervisor and follow-up group](#)

21 May 2015

Manage your Dissertation work

Responsible conduct of research
at every step!



"Each doctoral student is entitled to an adequate amount of guidance and counselling. The author, however, bears the primary responsibility for the completion and quality of the dissertation."
 - Degree Regulations of the University of Jyväskylä



21 May 2015

Be prepared to Publish

All researchers are expected to
publish their results.



21 May 2015

UNIVERSITY OF JYVÄSKYLÄ

Get to know your
Study and research environment

University strategy, policies and principles

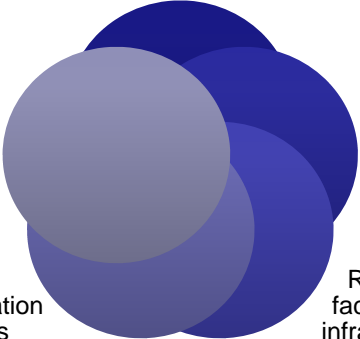
Research support services

Rules and regulations

Internal communication channels

Research facilities and infrastructures

21 May 2015



UNIVERSITY OF JYVÄSKYLÄ

Build up ability to tolerate
Uncertainty

For example:

- Research – everything does not always go as planned
- People – they tend to come and go
- Funding – a continuous struggle
- Academic career route – it is a competitive one

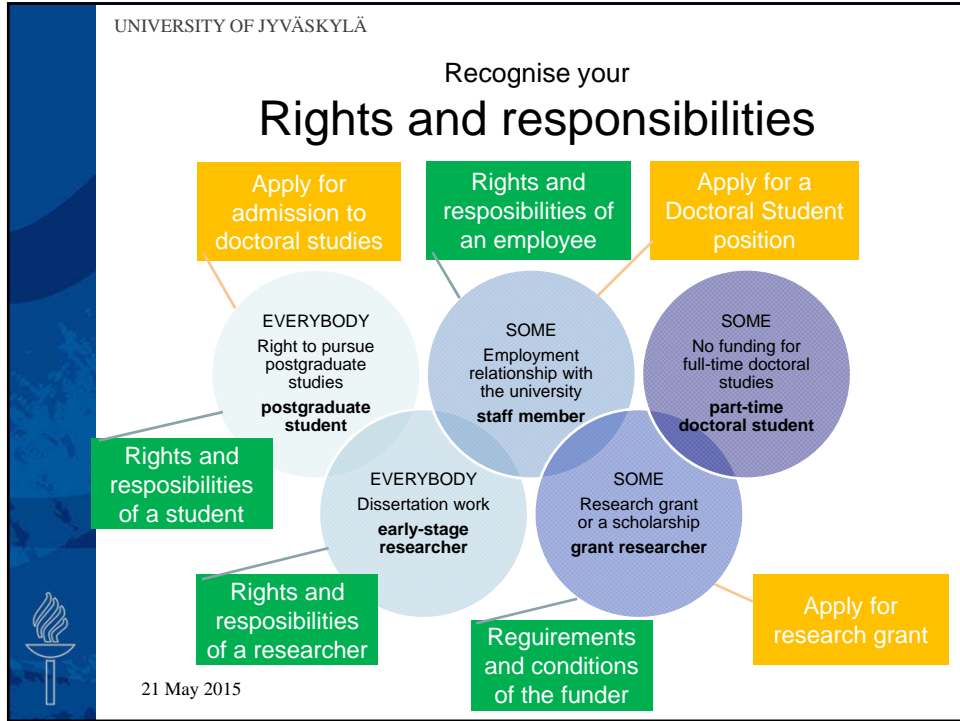
You will need:

- Dedication to your subject
- Resolution to overcome obstacles
- Confidence to deal with criticism
- Stamina in the face of demands
- Resilience in the job market

Sometimes hard, but so rewarding!

21 May 2015





UNIVERSITY OF JYVÄSKYLÄ

Thank you!

Contact information

- www.jyu.fi/graduateschool

AMICA VERITAS

21 May 2015